



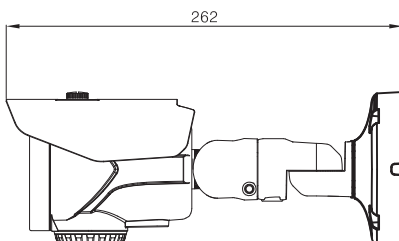
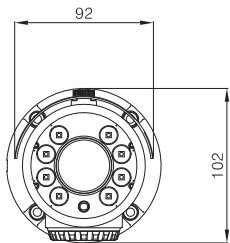
ALL-IN-ONE

1080P | 2.8-12 | Day&Night
5 -50 | ICR

Features

- 1080P real time image, high resolution, true color
- ALL-IN-ONE(HD TVI/EX SDI/HD SDI/ANALOG)
- TRUE WDR
- High speed, long distance, real time transmission
- Auto color to B / W at low illumination
- Support ICR switch, true day / night
- Support noise reduction function
- 2.8-12mm 48 IR 180 FT (VAC-8SW4B21A)
- 5 - 50mm 8 Intensive IR 200FT (VAC-8SWLB55A)
- DC 12V / AC 24V
- IP68

Dimensions



Specifications

DESCRIPTION	NTSC	PAL
IMAGE SENSOR	1/2.9" 2.4MEGAPIXEL SONY EXMOR CMOS	
EFFECTIVE PIXEL	1920 (H) × 1080 (V) = 2.4M	
SCANNING SYSTEM	PROGRESSIVE	
SYNCHRONIZATION	INTERNAL	
HORIZONTAL RESOLUTION	1080P HD	
VIDEO OUTPUT	HD-TVI, EX-SDI/HD-SDI, CVBS (OSD SELECTABLE)	
S/N (Y SIGNAL)	MORE THAN 52dB	
MIN. ILLUMINATION	0.02Lux (SENS-UP X32)	
IRIS ADJUSTMENT	ALC / ELC	
LENS	2.8~12mm MP LENS (ICR) VAC-8SW4B21A	5~50 mm MP LENS (ICR) VAC-8SWLB55A
ELECTRONIC SHUTTER	AUTO (1/30~1/60,000)	AUTO (1/25~1/60,000) FLK
OSD LANGUAGE	ENG / CHN / CHN[S] / JPN / KOR	
BACKLIGHT COMPENSATION	OFF / HLC / BLC / WDR	
DAY & NIGHT	COLOR / BW / EXTERN / AUTO	
WDR	OFF / LOW / MIDDLE / HIGH	
AUTO GAIN CONTROL	LEVEL (0~20) ADJUSTMENT	
WHITE BALANCE	AUTO / AUTODEXT / PRESET / MANUAL	
PRIVACY MASKING	ON / OFF (PROGRAMMABLE 16 ZONES)	
DNR	OFF / LOW / MIDDLE / HIGH	
SMART IR (ANTI-SAT)	ANTI-SET (0~20) ADJUSTMENT	
LSC	ON / OFF	
GAMMA	0.45 / 0.5 / 0.55 / 0.6 / 0.65	
DEFOG	ON / OFF	
DIGITAL ZOOM	ON / OFF (X1 ~ X8.0)	
DEAD PIXEL COMPENSATION	LIVE DPC / DPC SET	
SENS-UP	OFF / X2~X32	
MOTION	4 AREA	
DIGITAL EFFECT	OFF / V-FLIP / MIRROR / ROTATE	
COMMUNICATION	UTC	
IR LED	48PCS (180ft)	VAC-8SW4B21A
	A1B IR™ :8PCS (200ft)	VAC-8SWLB55A
INPUT VOLTAGE	DC 12V / AC 24V DUAL VOLTAGE	
POWER CONSUMPTION	DC IR OFF : 210mA (MAX) / DC IR ON : 650mA (MAX)	
	AC IR OFF : 200mA (MAX) / AC IR ON : 550mA (MAX)	
OPERATING TEMP. / HUM.	-30°C ~ 50°C (-22°F ~ 122°F) / MAX 90% RH	
STORAGE TEMP. / HUM.	-20°C ~ +60°C / MAX 90% RH	