

H.264 Full D1 Real-time Digital Video Recorder No more port-forwarding

PREMIUM SERIES (PM2-8C, PM2-16C)



**H.264, 4Ch Audio, DDNS, VGA, HDMI, DVD-RW
8Ch(240/240@CIF)/16Ch(480/480@CIF)
i-Phone Support**

Features

- TI HD Davinchi Based Platform w/ Powerful self developed codec
- Real-time Recording speed 480FPS @ CIF
- Support 1920x1080 display (HDMI)
- Real-time log viewer with snapshot image
- Smart Phone Viewer support
- Gigabit Ethernet
- Snapshot Uploading Function via E-MAIL
- G.M.T Time zone & D.S.T supported
- Remote PTZ control supported
- Two way audio communications
- Various Archiving Devices supported (CD/DVD-RW, USB Flash device, Network)
- Auto Bandwidth Control
- CMS Support

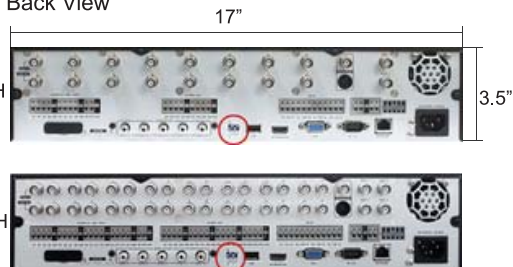
Dimensions

(unit:inch)

Top View



Back View



MODEL		PM2-8C	PM2-16C
Operating System		LINUX	
Pentaplex Function		Simultaneous Live/Record/Playback/Archive/Network	
Video Compression		H.264 Codec(DSP Based)	
Live Display Speed		240 fps	480 fps
Recording Speed		240 @ D1	480 @ CIF
Video Input		8CH(BNC)	16CH(BNC)
Video Output	HDMI	MAX (1920X1080)	
	VGA monitor	1 VGA (1024 X768)	
	Sub monitor	1 Composite(BNC) / 1 SVHS	
	Spot-out	2 Analog(BNC)	4 Analog(BNC)
	Loop out	8CH(BNC)	16CH(BNC)
Screen Division	Live	1,4,6,9	1,4,6,8,9,16
	Playback	1,4,9	1,4,9,16
Audio In/Out		4 Line in(RCA)/ 1 Line out(RCA), CODEC:G.711	
Alarm In/Out		8 In/ 8 Out	16 In/ 16 Out
Storage		up to 4 HDD's(SATA)+1 ODD,Support External Storage(Optional)	
Archive		USB Flash Device, CD/DVD-RW & Network	
USB Port		2 Front + 1 Rear	
PTZ & Keyboard control		RS-485	
UTC		BBV, COAXITRON (Option Board)	
System Control		USB Mouse,Front button,Remote controller&Keyboard controller	
Network		LAN, DHCP, Dynamic IP, DDNS	
Power		SMPS, MAX.200W, 100~220VAC, 50~60Hz	
Operating Temperature		0 °C ~ 40 °C	
Humidity		10 ~ 90% NC	
Dimeitions(inch)/Weight(lb)		17 x 16.5 x 3.5(WxHxD)/11.33 lb	
RemoteSW		CMS/RA support, Web Browser, PDA Viewer, Smart Phone	
MAIN FEATURES			
LIVE DISPLAY			
OSD		On/Off	
Border Color		Selectable	
Digital Zoom		up to 4X	
SEARCH			
Calendar Search		Search by time	
Event Search		Search by event	
Panorama Search		Frame by Frame / Multi-hour	
PLAYBACK			
Playback Speed		Variable Playback(Max.64x)	
Instant playback		Instant playback mode for quick review	
Audio Play		Synchronized with Video	
SYSTEM			
Video Covert		Video will be hidden Live & Playback mode, but it will be recorded	
PTZ		Supported most of PTZ protocol, Preset up to 255	
Motion Area Setting		Adjustable GRID(20X12), 10 Steps Sensitivity Level	
Time Synchronization		Auto Time Sync. By NTP server	
User Authority		Each User Group has different function	
System Reliability		Watch-Dog, Auto-Recovery after power Failure	
Firmware Upgrade		Via USB Flash device and Network	
Configuration Export & Import		Setting configuration copy & paste to other DVR via USB	
S.M.A.R.T. Alarm		Auto-Detect & monitoring the HDD's problem	
RECORD			
Resolution Setting		By each camera for different resolution setting(CIF/2CIF/D1)	
Recording Quality Control		4 Levels (Low/Standard/High/Highest)	
Recording Schedule		By hour, by day, by recording mode, By alarm, By Ch	
Panic Record		Overrides all other recording settings to provide the best quality recording	
Pre-recording		Max. 5 seconds	
Post-recording		Max. 180 seconds	
ARCHIVE			
Archive Device		CD/DVD/USB Flash device	
File Format		AVI file	
Bookmark Archiving		Supported	
Player		Backup player, Window Media Player and HDD PC Viewer	
NETWORK			
Network Support Type		LAN/DHCP/DDNS	
Net Client & Web Server Port		Programmable by User	
E-mail notification		E-mails to specific users to notify events	
System Configuration		Full setup configuration over network	
Bandwidth limit		Limitable Network Bandwidth by User	
Two-Way Audio		Communication with RemoteSW	
Others			
Watermark		Watermarked Video & Audio for security	
Video Analytics		H/W option	
POS		Supported (TBD)	

Made in Korea

STANDALONE DVR SERIES

H.264 Real-time Digital Video Recorder
1080p HD Display : HDMI out
Dual Streaming
Auto Bandwidth Control for Client
Universal Plug and Play supported

No more need for port-forwarding
Supports PDA Viewer and Smart Phone

ENTERPRISE SERIES



8CH / 16CH, D1@Realtime, DVDRW
HDMI 1080P Display, 2U Rack mountable

PREMIUM SERIES



8CH / 16CH, CIF@Realtime, DVDRW
HDMI 1080P Display, 2U Rack mountable

PROFESSIONAL SERIES



4CH / 8CH / 16CH, CIF@Realtime, DVDRW
DVI, 1.5U Rack mountable

ELITE SERIES



4CH / 8CH / 16CH, CIF@Realtime
VGA

Specification

SERIES		ENTERPRISE		PREMIUM		PRO			ELITE		
											
Model		EP-8D	EP-16D	PM2-8C	PM2-16C	PR-424	PR-824	PR-1648	EL-412	EL-824	EL-1648
Operating System		LINUX				LINUX					
Pentaplex Function		Simultaneous Live/Record/Playback/Archive/Network				Simultaneous Live/Record/Playback/Archive/Network					
Video Compression		H.264 Codec				H.264 Codec					
Recording Speed (FPS)		240 @ D1 (720x480)	480 @ D1 (720x480)	240 @ CIF	480 @ CIF	120 @ 2CIF	240 @ CIF	480 @ CIF	120 @ CIF	240 @ CIF	480 @ CIF
Video Input		8CH(BNC)	16CH(BNC)	8CH(BNC)	16CH(BNC)	4CH(BNC)	8CH(BNC)	16CH(BNC)	4CH(BNC)	8CH(BNC)	16CH(BNC)
Loop out		8CH(BNC)	16CH(BNC)	8CH(BNC)	16CH(BNC)	N/A	N/A	N/A	N/A	N/A	N/A
Video Output	HDMI	MAX (1920X1080), 1080p Full HD		MAX (1920X1080), 1080p Full HD		N/A			N/A		
	VGA monitor	SXGA (1280 X1024) / Composite(BNC) / SVHS		1 VGA (1024X768), 1 Composite(BNC)		1 DVI-I(1024X768), 1 Composite(BNC)			1280x1024	1 VGA (1024X768), 1 Composite	
	Spot-out	2 Analog(BNC)	4 Analog(BNC)	2 Analog(BNC)	4 Analog(BNC)	1 Composite(BNC)			1 Composite(BNC)		
Screen Division	Live	1,4,6,8,9,16	1,4,6,8,9,16	1,4,6,9	1,4,6,8,9,16	1,4	1,4,6,8,9	1,4,6,8,9,16	1,4	1,4,6,8,9	1,4,6,8,9,13,16
	Playback	1,4,16	1,4,9,16	1,4,9	1,4,16	1,4	1,4,9	1,4,9,16	1,4	1,4,8	1,4,8,16
Audio In/Out		4 Line in(RCA)/ 1 Line out(RCA), CODEC:G.711		4 Line in(RCA)/ 1 Line out(RCA), CODEC:G.711		4 Line in(RCA)/ 1 Line out(RCA), CODEC:G.711			4 Line in(RCA)/ 1 Line out(RCA), CODEC:G.711		
Alarm In/Out		8 In/ 8 Out	16 In/ 16 Out	8 In/ 8 Out	16 In/ 16 Out	4 In/ 1 relay			4 In/ 1 relay		
Storage		4 HDD's(SATA) + 1 ODD		4 HDD's(SATA) + 1 ODD		2 HDD's(SATA) + 1 ODD			Up to 2 HDD's(SATA)		
External Storage		e-SATA interface, Suproted Optional Storage Bay				N/A			N/A		
Archive		USB Device, CD/DVD-RW & Network				USB Device, CD/DVD-RW & Network			USB Device, Network		
USB Port		3(Front 2, Rear 1)		3(Front 2, Rear 1)		2 (Front)			2(Front 1, Rear 1)		
PTZ & Keyboard control		RS-485				RS-485					
System Control		USB Mouse, Front button, Remote controller & Keyboard controller				USB Mouse, Front button, Remote controller & Keyboard controller			USB Mouse, Remote controller		
Network		LAN, DHCP, Dynamic IP, DDNS,				LAN, DHCP, Dynamic IP, DDNS,					
Power		SMPS, MAX.200W, 100~220VAC, 50~60Hz				12V Adaptor, 5A, 100~220VAC, 50~60Hz					
Operating Temperature		0℃ ~ 40℃				0℃ ~ 40℃					
Humidity		10 ~ 90% NC				10 ~ 90% NC					
RemoteSW		CMS support, Web Browser, PDA Viewer, Smart Phone, i-Phone				CMS support, Web Browser, PDA Viewer, Smart Phone, i-Phone					

STANDALONE DVR GUI

WEB REMOTE VIEWER



Simple & Easy

- Supports all current internet browsers (Internet Explorer, Firefox, Safari, Chrome)
- PTZ control
- Remote Setup
- Remote Playback
- Remote Backup
- Easy connect and use
- Auto bandwidth control

iPhone REMOTE VIEWER



Smart Phone Remote Viewer

- Remote Search/Setup
- Remote PTZ Control

SETUP

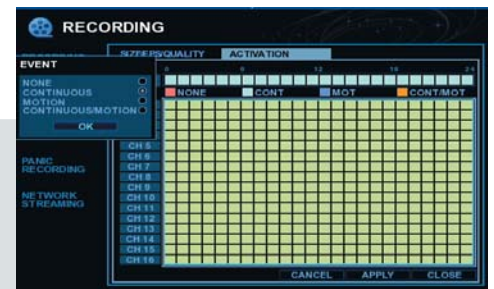


MAIN SETUP

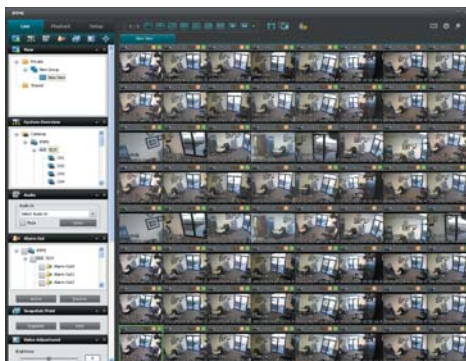
Camera, Display, Sound, System
User, Network, Alarm, Disk
Watermark, POS, ARCHIVE
User Authority, PTZ

RECORDING SETUP

PANIC RECORDING
Motion, Continuous, Combo
By each camera for different
resolution setting(CIF/2CIF/D1)



EZ CMS (Connect Analog DVR + EZ IP Camers + EZ IP NVR)

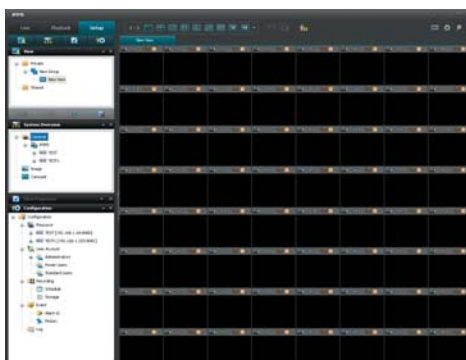


LIVE

upto 64CH Live Video,
Multiple Screen
Live Audio, Backup to Local HDD

SETUP

Remote Setup
Multi DVR control with group
Exporting in AVI and Still image
Printing Evidence
Digital Zoom
Full Screen Viewing
Using multiple windows
Sending a channel to a Floating Windows
Manually Activating Output
Audio when playback mode



PLAYBACK

Timeline browser
Time navigation
Audio when playback mode

