

H.264 Full D1 Real-time Digital Video Recorder No more port-forwarding

ELITE SERIES (EL-424 / EL-824 / EL-1648)



H.264, DDNS, VGA
4Ch(120/120@2CIF),
8Ch(240/240@CIF),
16Ch(480/480@CIF),
i-Phone Support

Features

- TI HD Davinchi Based Platform w/ Powerful self developed codec
- Real-time Recording speed @ CIF
- Support 1280x1024 display (EL-424)
- Real-time log viewer with snapshot image
- Smart Phone Viewer support
- Gigabit Ethernet
- Snapshot Uploading Function via E-MAIL
- G.M.T Time zone & D.S.T supported
- Remote PTZ control supported
- Two way audio communications
- Various Archiving Devices supported (USB Flash device, Network)
- Auto Bandwidth Control
- CMS Support

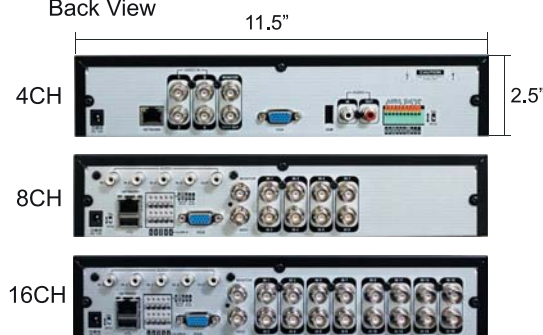
Dimensions

(unit:inch)

Top View



Back View



MODEL	EL-424	EL-824	EL-1648
Operating System	LINUX		
Pentaplex Function	Simultaneous Live/Record/Playback/Archive/Network		
Video Compression	H.264 Codec(DSP Based)		
Live Display Speed	120 fps	240 fps	480 fps
Recording Speed	120 @ 2CIF	240 @ CIF	480 @ CIF
Video Input	4CH(BNC)	8CH(BNC)	16CH(BNC)
Video Output	VGA monitor	SXGA (1280 x 1024)	
	Sub monitor	1024 x 768	
	Spot-out	1 Composite(BNC)	
	Loop-out	1 Composite(BNC)	
Screen Division	Live	1,4	1,4,6,8,9
	Playback	1,4	1,4,9
Audio In/Out	4 in (RCA) / 1 out (RCA), CODEC: G.711		
Alarm In/Out	4 In/ 1 relay		
Storage	2 HDD + 1 ODD		
Archive	USB Flash Device, CD/DVD-RW & Network		
USB Port	1.3U : 1 Front + 1 Rear		
PTZ & Keyboard control	RS-485		
System Control	USB Mouse,Front button,Remote controller&Keyboard controller		
Network	LAN, DHCP, Dynamic IP, DDNS		
Power	12V Adaptor, 5A, 50~60Hz		
Operating Temperature	0 °C ~ 40 °C		
Humidity	10 ~ 90% NC		
Dimensions(Inch)/Weight(lb)	12.52 x 9.84 x 2.28(WxHxD), 1.3U CASE / 8.81 lb		
RemoteSW	CMS support, Web Viewer		
MAIN FEATURES			
LIVE DISPLAY			
OSD	On/Off		
Border Color	Selectable		
Digital Zoom	None		
SEARCH			
Calendar Search	Search by time		
Event Search	Search by event		
PLAYBACK			
Playback Speed	Variable Playback(Max.64x)		
Playback Rate	Up to 120fps @ 360 x 240		
Audio Play	Synchronized with Video		
SYSTEM			
Video Covert	Video will be hidden Live & Playback mode, but it will be recorded		
PTZ	Supported most of PTZ protocol, Preset up to 255		
Motion Area Setting	Adjustable GRID (8 X 11), 10 Steps Sensitivity Level		
Time Synchronization	Auto Time Sync. By NTP server		
User Authority	Each User Group has different function		
System Reliability	Watch-Dog, Auto-Recovery after power Failure		
Firmware Upgrade	Via Flash USB device		
Configuration Export & Import	Setting configuration copy & paste to other DVR via USB		
S.M.A.R.T. Alarm	Auto-Detect & monitoring the HDD's problem		
RECORD			
Resolution Setting	By each camera for different resolution setting(CIF/2CIF/D1)		
Recording Quality Control	5 Levels (Low / Standard / High / Highest / Super)		
Recording Schedule	By hour, by day, by recording mode, By alarm, By Ch		
Panic Record	Overrides all other recording settings to provide the best quality recording		
Pre-recording	Max. 5 seconds		
Post-recording	Max. 180 seconds		
ARCHIVE			
Archive Device	Flash USB device		
File Format	AVI file		
Bookmark Archiving	Supported		
Player	Backup player, Window Media Player		
NETWORK			
Network Support Type	LAN / DHCP / DDNS		
Net Client & Web Server Port	Programmable by User		
E-mail notification	E-mails to specific users to notify events		
System Configuration	Full setup configuration over network		
Bandwidth limit	Limitable the Network Bandwidth by User		
Two-Way Audio	Communication with RemoteSW		
Others			
Watermark	Watermarked Video & Audio for security		

Made in Korea

STANDALONE DVR SERIES

H.264 Real-time Digital Video Recorder
1080p HD Display : HDMI out
Dual Streaming
Auto Bandwidth Control for Client
Universal Plug and Play supported

No more need for port-forwarding
Supports PDA Viewer and Smart Phone

ENTERPRISE SERIES



8CH / 16CH, D1@Realtime, DVDRW
HDMI 1080P Display, 2U Rack mountable

PREMIUM SERIES



8CH / 16CH, CIF@Realtime, DVDRW
HDMI 1080P Display, 2U Rack mountable

PROFESSIONAL SERIES



4CH / 8CH / 16CH, CIF@Realtime, DVDRW
DVI, 1.5U Rack mountable

ELITE SERIES



4CH / 8CH / 16CH, CIF@Realtime
VGA

Specification

SERIES	ENTERPRISE				PREMIUM				PRO			ELITE		
Model	EP-8D	EP-16D	PM2-8C	PM2-16C	PR-424	PR-824	PR-1648	EL-412	EL-824	EL-1648				
Operating System	LINUX								LINUX					
Pentaplex Function	Simultaneous Live/Record/Playback/Archive/Network								Simultaneous Live/Record/Playback/Archive/Network					
Video Compression	H.264 Codec								H.264 Codec					
Recording Speed (FPS)	240 @ D1 (720x480)	480 @ D1 (720x480)	240 @ CIF	480 @ CIF	120 @ 2CIF	240 @ CIF	480 @ CIF	120 @ CIF	240 @ CIF	480 @ CIF				
Video Input	8CH(BNC)	16CH(BNC)	8CH(BNC)	16CH(BNC)	4CH(BNC)	8CH(BNC)	16CH(BNC)	4CH(BNC)	8CH(BNC)	16CH(BNC)				
Loop out	8CH(BNC)	16CH(BNC)	8CH(BNC)	16CH(BNC)	N/A	N/A	N/A	N/A	N/A	N/A				
Video Output	HDMI	MAX (1920X1080),1080p Full HD		MAX (1920X1080),1080p Full HD		N/A			N/A					
	VGA monitor	SXGA (1280 X1024) / Composite(BNC) / SVHS		1 VGA (1024X768), 1 Composite(BNC)		1 DVI-I(1024X768), 1 Composite(BNC)			1280x1024	1 VGA (1024X768), 1 Composite				
	Spot-out	2 Analog(BNC)	4 Analog(BNC)	2 Analog(BNC)	4 Analog(BNC)	1 Composite(BNC)			1 Composite(BNC)					
Screen Division	Live	1,4,6,8,9,16	1,4,6,8,9,16	1,4,6,9	1,4,6,8,9,16	1,4	1,4,6,8,9	1,4,6,8,9,16	1,4	1,4,6,8,9	1,4,6,8,9,13,16			
	Playback	1,4,16	1,4,9,16	1,4,9	1,4,16	1,4	1,4,9	1,4,9,16	1,4	1,4,8	1,4,8,16			
Audio In/Out	4 Line in(RCA)/ 1 Line out(RCA), CODEC:G.711				4 Line in(RCA)/ 1 Line out(RCA), CODEC:G.711				4 Line in(RCA)/ 1 Line out(RCA), CODEC:G.711					
Alarm In/Out	8 In/ 8 Out	16 In/ 16 Out	8 In/ 8 Out	16 In/ 16 Out	4 In/ 1 relay			4 In/ 1 relay						
Storage	4 HDD's(SATA) + 1 ODD				4 HDD's(SATA) + 1 ODD				2 HDD's(SATA) + 1 ODD			Up to 2 HDD's(SATA)		
External Storage	e-SATA interface, Suppoted Optional Storage Bay								N/A			N/A		
Archive	USB Device, CD/DVD-RW & Network								USB Device, CD/DVD-RW & Network			USB Device, Network		
USB Port	3(Front 2, Rear 1)		3(Front 2, Rear 1)		2 (Front)			2(Front 1, Rear 1)						
PTZ & Keyboard control	RS-485								RS-485					
System Control	USB Mouse, Front button, Remote controller & Keyboard controller								USB Mouse, Front button, Remote controller & Keyboard controller		USB Mouse, Remote controller			
Network	LAN, DHCP, Dynamic IP, DDNS,								LAN, DHCP, Dynamic IP, DDNS,					
Power	SMPS, MAX.200W, 100-220VAC, 50-60Hz								12V Adaptor, 5A, 100-220VAC, 50-60Hz					
Operating Temperature	0°C - 40°C								0°C - 40°C					
Humidity	10 - 90% NC								10 - 90% NC					
RemoteSW	CMS support, Web Browser, PDA Viewer, Smart Phone, i-Phone								CMS support, Web Browser, PDA Viewer, Smart Phone, i-Phone					

STANDALONE DVR GUI

WEB REMOTE VIEWER



- Simple & Easy**
- Supports all current internet browsers (Internet Explorer, Firefox, Safari, Chrome)
 - PTZ control
 - Remote Setup
 - Remote Playback
 - Remote Backup
 - Easy connect and use
 - Auto bandwidth control

iPhone REMOTE VIEWER



- Smart Phone Remote Viewer**
- Remote Search/Setup
 - Remote PTZ Control

SETUP

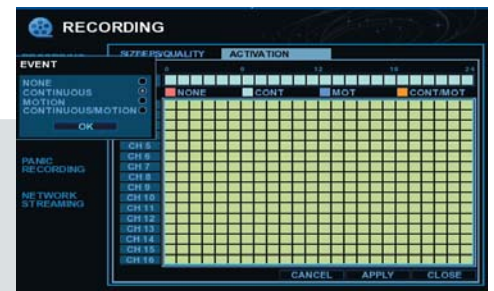


MAIN SETUP

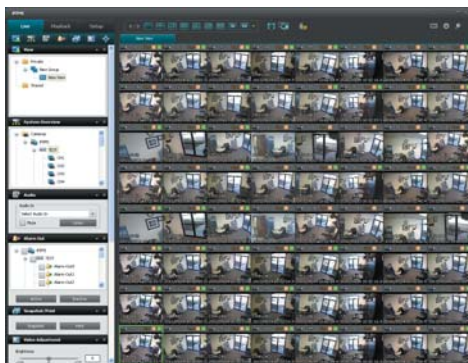
Camera, Display, Sound, System User, Network, Alarm, Disk Watermark, POS, ARCHIVE User Authority, PTZ

RECORDING SETUP

PANIC RECORDING
Motion, Continuous, Combo
By each camera for different resolution setting(CIF/2CIF/D1)



EZ CMS (Connect Analog DVR + EZ IP Camers + EZ IP NVR)

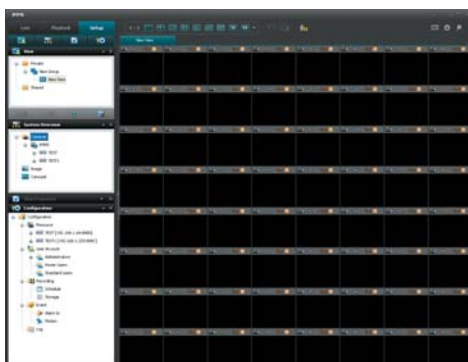
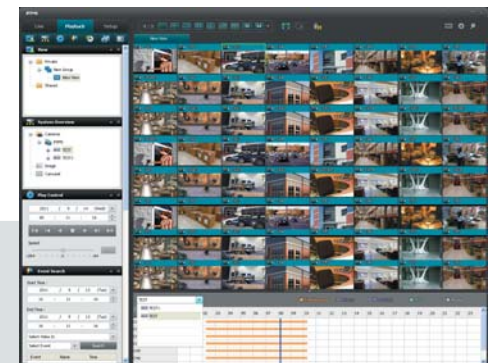


LIVE

upto 64CH Live Video,
Multiple Screen
Live Audio, Backup to Local HDD

SETUP

Remote Setup
Multi DVR control with group
Exporting in AVI and Still image
Printing Evidence
Digital Zoom
Full Screen Viewing
Using multiple windows
Sending a channel to a Floating Windows
Manually Activating Output Audio when playback mode



PLAYBACK

Timeline browser
Time navigation
Audio when playback mode

