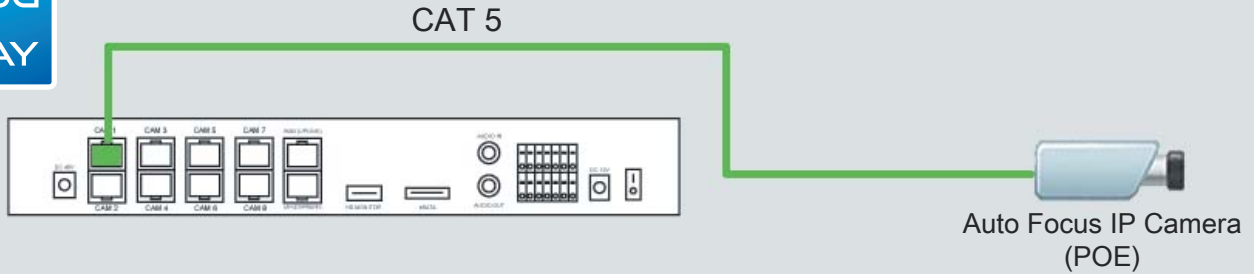


**EZ IP NVR (Stand Alone POE Unit) - 4CH / 8CH**

**PLUG  
&  
PLAY**

**1080p 2-MegaPixels Real-Time Recording Stand Alone NVR System!**



TRUE PLUG & PLAY IP SYSTEM! No IP setup necessary, all cameras POE (Power Over Ethernet)! 1080P Display, Smart Phone Support, EZ CMS Available with Analog DVR + HDSDI DVR + IP NVR

**Features**

- 1080p Display & 1080p Realtime Recording
- Smart Phone Application
- CMS Support (EZ CMS)
- Tribrid (HD-SDI, IP, Analog) available in CMS
- eSATA, NAS FTP Server
- Built in POE Switching HUB
- Auto Router Port Forwarding
- Plug & Play Display
- 1920x1080(1080P) realtime recording
- PC Based Remote Agent (Windows, Mac)
- Web Based Remote Agent
- Max # of Connections to unit - 8 Users

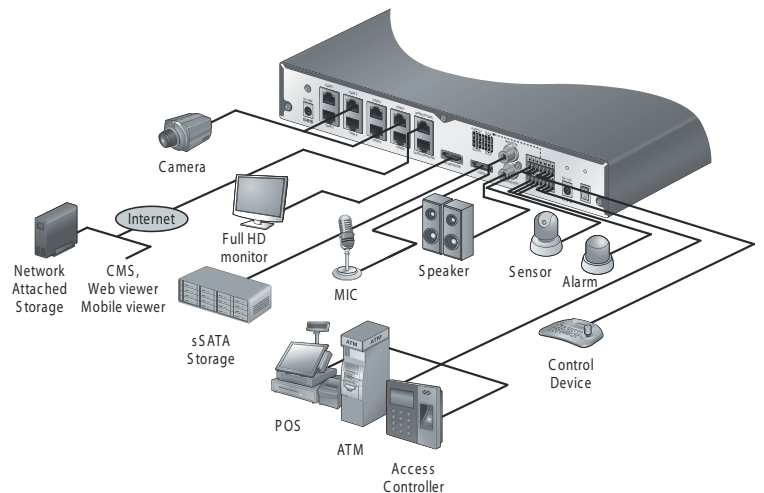
**H.264, HDMI, DDNS, 1U Case**  
**4Ch(120 FPS@1080p)/8Ch(240FPS@1080p),**  
**eSATA External HDD available**  
**Built in POE Switch**  
**iPhone Support**



**EZIN-L412 - 4 CHANNELS**

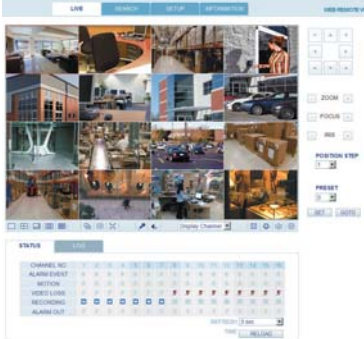


**EZIN-L824 - 8 CHANNELS**



**EZ IP NVR (Stand Alone POE Unit) - GUI**

**WEB REMOTE VIEWER**



**SIMPLE & EASY**

- Supports all current internet browsers (Internet Explorer, Firefox, Safari, Chrome)
- PTZ control
- Remote Setup
- Remote Playback
- Remote Backup
- Easy connect and use
- Auto bandwidth control

**iPhone REMOTE VIEWER**



**Smart Phone Remote Viewer**

- Remote Search/Setup
- Remote PTZ Control

**SETUP**

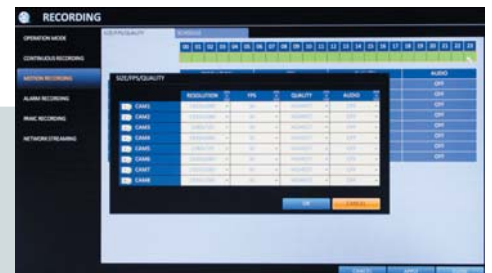


**MAIN SETUP**

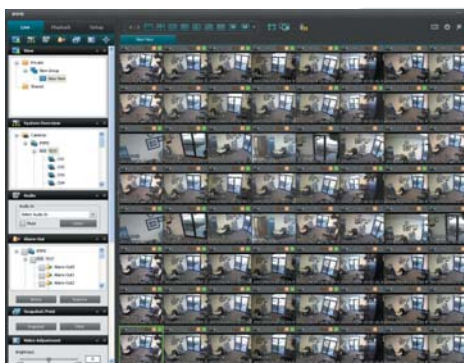
Camera, Display, Sound, System User, Network, Alarm, Disk Watermark, POS, ARCHIVE User Authority, PTZ

**RECORDING SETUP**

PANIC RECORDING  
Motion, Continuous, Combo  
By each camera for different resolution setting(CIF/2CIF/D1)



**EZ CMS (Connect Analog DVR + EZ IP Camers + EZ IP NVR)**

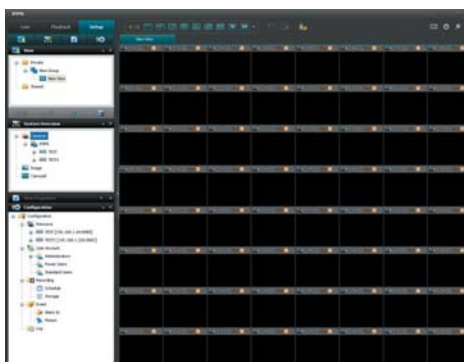
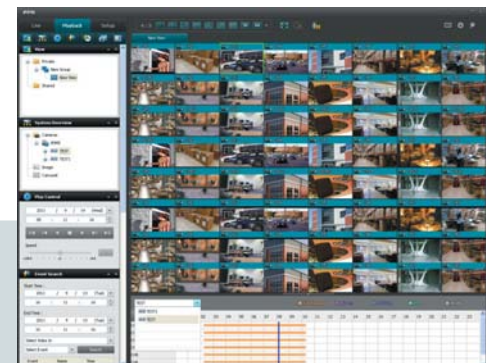


**LIVE**

upto 64CH Live Video,  
Multiple Screen  
Live Audio, Backup to Local HDD

**SETUP**

- Remote Setup
- Multi DVR control with group
- Exporting in AVI and Still image
- Printing Avidence
- Digital Zoom
- Full Screen Viewing
- Using multiple windows
- Sending a channel to a Floating Windows
- Manually Activating Output Audio when playback mode



**PLAYBACK**

Timeline browser  
Time navigation  
Audio when playback mode

