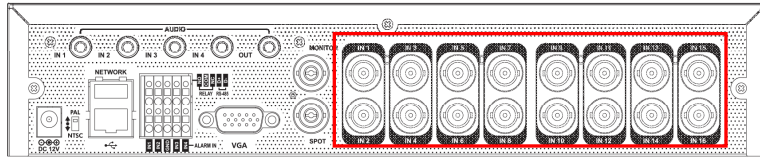


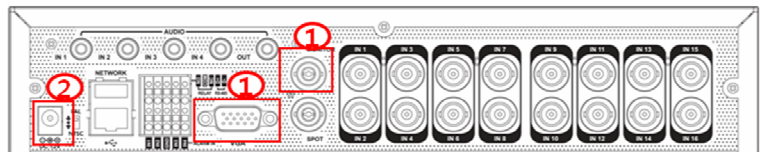
Quick Guide

1. CONNECTION

- a. Connect cameras to input ports (1 ~16ch)



- b. Connect VGA or Composite(1) and Power cable(2).



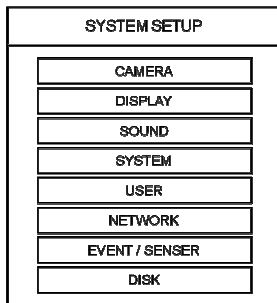
2. RECORDING SETUP

♣ Motion Recording setup.

- a. Select the Menu Icon by Mouse click.
or Press the Menu button on the front panel.



- b.

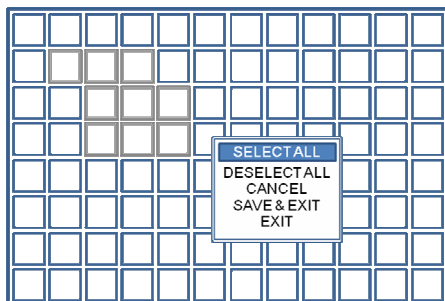


Select System setup.
Select the CAMERA menu
and MOTION SENSOR menu.

- c. Select the SENSITIVITY of motion.

CAMERA			
CAMERA SETUP	CH 1	5	2
	CH 2	5	2
	CH 3	5	2
COLOR SETUP	CH 4	5	2
	CH 5	5	2
	CH 6	5	2
	CH 7	5	2
PTZ SETUP	CH 8	5	2
	CH 9	5	2
	CH 10	5	2
	CH 11	5	2
	CH 12	5	2
	CH 13	5	2
	CH 14	5	2
	CH 15	5	2
	CH 16	5	2

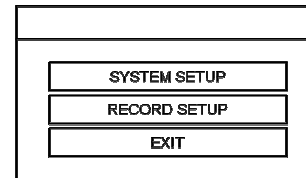
- d. Select the Area SETUP.



Select the area
by the mouse drag and
save it.

♣ Continuous Recording setup

- a. Select the RECORD MENU.----->



- b. Set Recording parameter

Select Time line

- a) Move a select box to time line by Cursors.
b) Press Enter to start select a time area.
c) Move cursors up to proper time.
d) Press Enter to stop selection.

RECORDING				
RECORDING	SIZE/FPS/QUALITY	ACTIVATION		
OPERATIONS	SUN 0	6	12	18
	TIME	0	6	12
CONTINUOUS	CH 1	SIZE	FPS	QUALITY
MOTION	CH 2	CIF	30	HIGHEST

- c. Resolution size/ FPS / Quality / Audio

	SIZE	FPS	QUALITY	AUDIO
CH 1	CIF	30	HIGHEST	OFF
CH 2	CIF	30	HIGHEST	OFF
CH 3	CIF	30	HIGHEST	OFF
CH 4	CIF	30	HIGHEST	OFF
CH 5	CIF	30	HIGHEST	OFF
CH 6	CIF	30	HIGHEST	OFF
CH 7	CIF	30	HIGHEST	OFF
CH 8	CIF	30	HIGHEST	OFF

Select a proper value for recording on each channel.

- d. Select Recording Mode(Motion / Continuous)

Select Activation Tab.

- a) After finish to set parameter.
b) Press Return Button 1 time.
c) Then move the selection box to ACTIVATION tab

Select Area for applying parameter.

- a) Move a cursors to select area.
b) Press Return to finish selection area
c) Select recording MODE(Motion / Continuous)

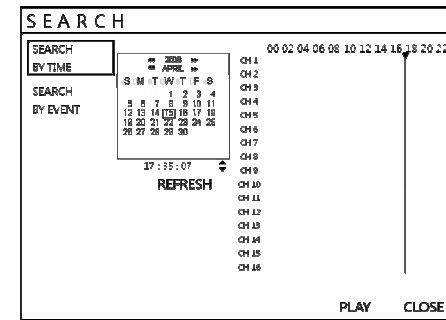
RECORDING				
RECORDING	SIZE/FPS/QUALITY	ACTIVATION		
OPERATIONS	SUN 0	6	12	18
	TIME	0	6	12
CONTINUOUS	CH 1	NONE	CONT	MOTION
MOTION	CH 2	NONE	CONT	MOTION
RECORDING	CH 3	NONE	CONT	MOTION
	CH 4	NONE	CONT	MOTION
	CH 5	NONE	CONT	MOTION
	CH 6	NONE	CONT	MOTION
	CH 7	NONE	CONT	MOTION
	CH 8	NONE	CONT	MOTION
	CH 9	NONE	CONT	MOTION
	CH 10	NONE	CONT	MOTION
	CH 11	NONE	CONT	MOTION
	CH 12	NONE	CONT	MOTION
	CH 13	NONE	CONT	MOTION
	CH 14	NONE	CONT	MOTION
	CH 15	NONE	CONT	MOTION
	CH 16	NONE	CONT	MOTION

RECORDING				
RECORDING	SIZE/FPS/QUALITY	ACTIVATION		
OPERATIONS	SUN 0	6	12	18
	TIME	0	6	12
CONTINUOUS	CH 1	NONE	CONT	MOTION
MOTION	CH 2	NONE	CONT	MOTION
RECORDING	CH 3	NONE	CONT	MOTION
	CH 4	NONE	CONT	MOTION
	CH 5	NONE	CONT	MOTION
	CH 6	NONE	CONT	MOTION
	CH 7	NONE	CONT	MOTION
	CH 8	NONE	CONT	MOTION
	CH 9	NONE	CONT	MOTION
	CH 10	NONE	CONT	MOTION
	CH 11	NONE	CONT	MOTION
	CH 12	NONE	CONT	MOTION
	CH 13	NONE	CONT	MOTION
	CH 14	NONE	CONT	MOTION
	CH 15	NONE	CONT	MOTION
	CH 16	NONE	CONT	MOTION

3. SEARCH

- a. Select the SEARCH Icon by mouse
Click or press Search Button on Front panel

SEARCH

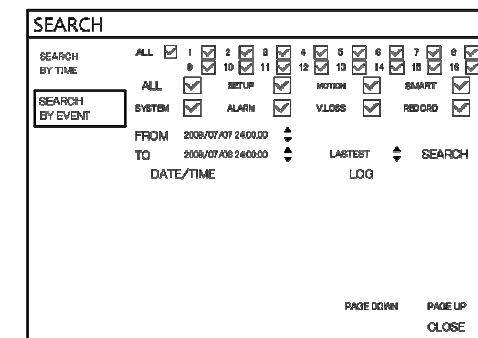


♣ TIME SEARCH [A]

Select a date. If there is a data, the date will be displayed with color.
To select time, move the time bar by mouse drag.
Then press Play button to start playback.

♣ EVENT SEARCH [B]

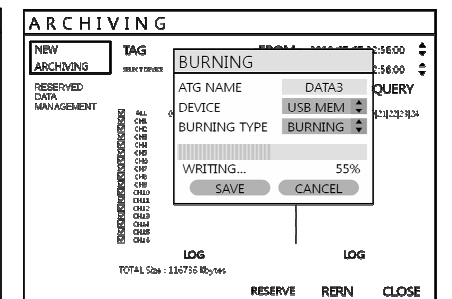
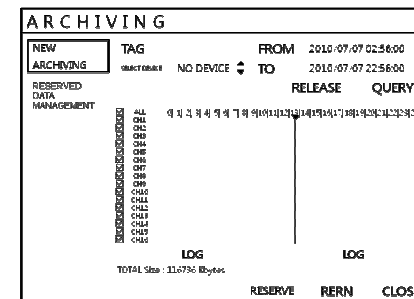
Select a time at the FROM and TO.
Select Events (Alarm, Timer, Motion and ETC).
Select channels.



Press the SEARCH button.
Select the event and press Enter or double click by mouse.

4. ARCHIVE

- a. Select the ARCH Icon by mouse or Press ARCHIVE button.
b. Set the FROM and TO time.
c. Select the camera channels
d. Press QUERY button to check data size
e. Select the backup device.
f. Press BURN button.



● CAUTION

Do not remove USB device during Archiving procedure.

Quick Guide

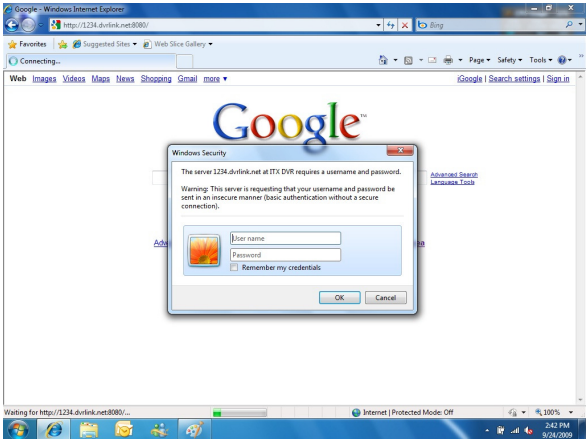
5. CLIENT SETUP

5-1.HOW TO CONNECT

Input the IP Address or URL of the DVR in the Internet Explorer
If user uses the DDNS, input the URL as below.

<http://1234.dvrlink.net>

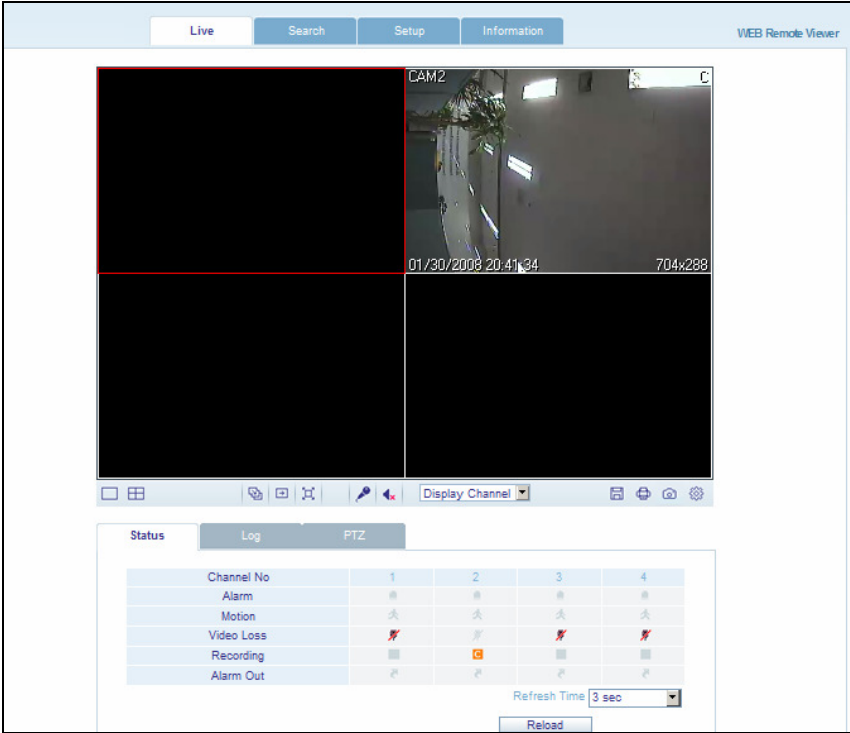
or <http://1234.dvrlink.net:XXXX> (XXXX is webport number)



Allow to install ActiveX,
To install activeX on WindowVisa or higher version, User must have
Administrator level of authority

WEB RA MINIMUM PC REQUIREMENT	
CPU	P4 3.0 or Higher
RAM	512MB or Higher
VGA	Geforce MS 400, Radeon 7500 or higher
	Gefore 8 series or higher
VGA MEMORY	64MB
MONITOR	1280X1024
OS	WINDOW XP2
IE VERSION	IE6.0 or higher
NETWORK	100Mbps
DIRECT X	V7.0 or higher

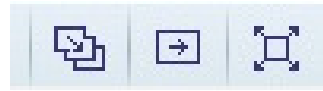
5-2.LIVE VIEW MODE



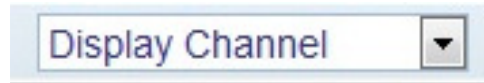
BUTTONS



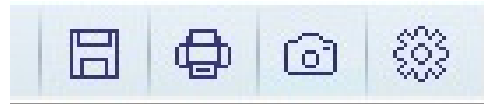
Select one of the screen mode(1CH Full screen, 4CH view mode).



Move to next screen and make full screen



Select a channel.



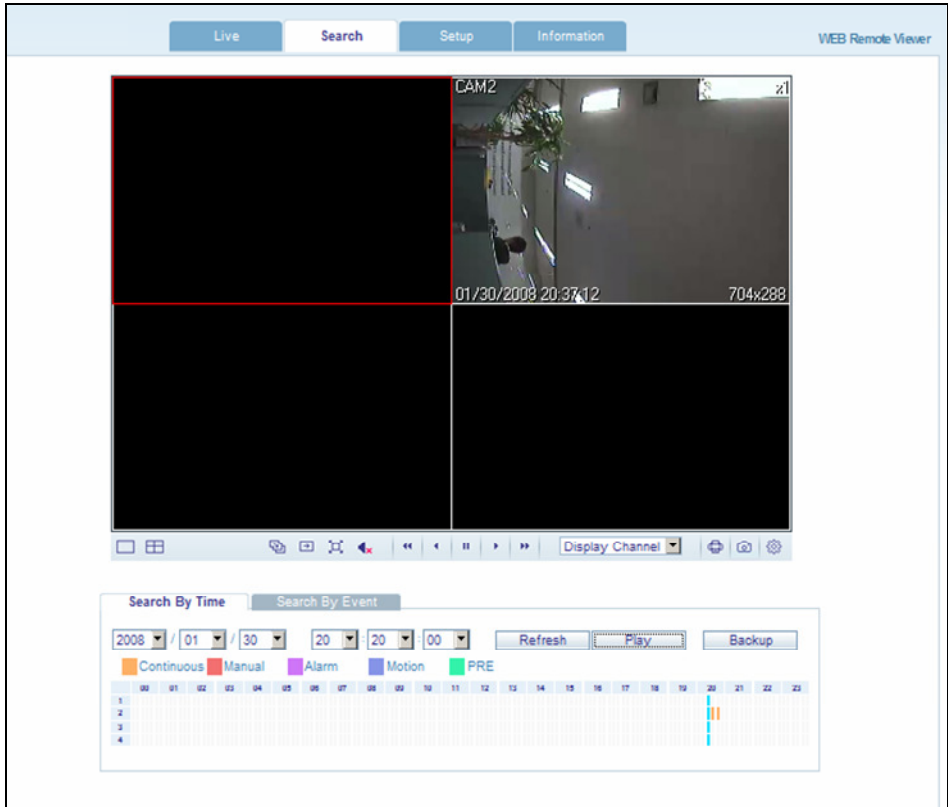
Save the live image.

Print the current screen.

Snapshot of the current screen.

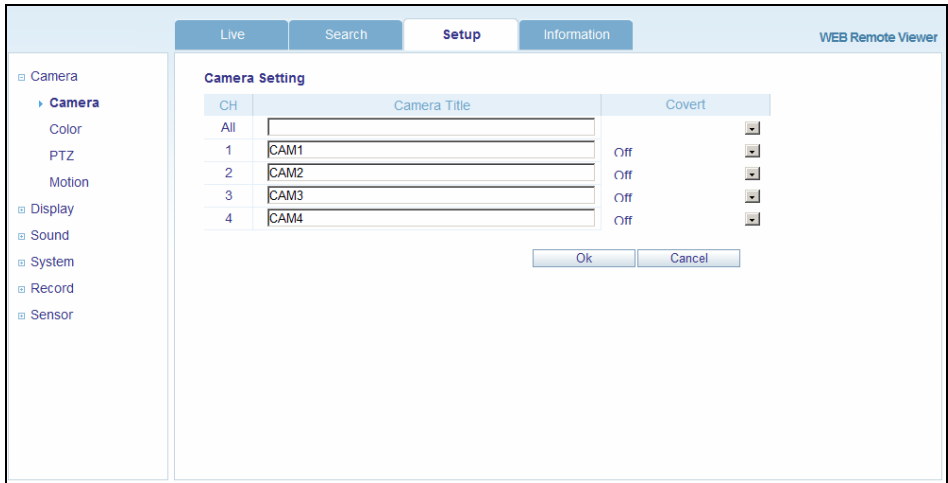
Setup for WEB Browser ([VGA Render] and [Save Folder])

5-3.SEARCH MODE



1. Refresh : Refresh the time line for recording data
2. Play : After select the date and time, user can play images.
3. Backup : User can backup a data as selected channel and time.

5-4. REMOTE SETUP FOR DVR



All setup details are same as system, refer the system manual for remote configuration.